



# Wedmaier Homes



## THE PHOENIX

4



2



2



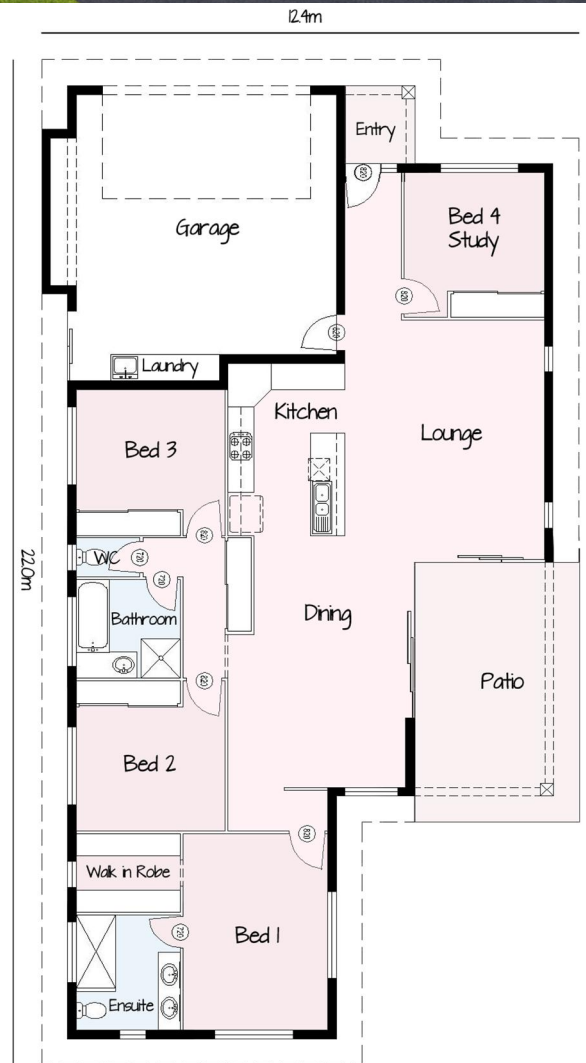
1



The Phoenix is a unique home ideally suited to a small family. Perfectly suited to narrow blocks, it allows all living areas to open into the back yard and maximises the use of the block giving the owner a good size back yard.

- 4 Bedrooms (or 3 + study)
- Double Garage
- Open Plan Living with feature stacker doors onto patio
- Security Screens
- Tiles to living areas
- Carpet to bedrooms
- Custom Designed Kitchen
- European Appliances
- Quality Plumbing Items
- Exposed Aggregate Driveway
- Automatic Garage Door
- A/C to all bedrooms

Living: 149m<sup>2</sup>  
 Garage: 45m<sup>2</sup>  
 Patio: 23m<sup>2</sup>  
 Porch: 3m<sup>2</sup>  
 Total: 220m<sup>2</sup>



+61 7 4035 6177  
 sales@wedmaierhomes.com.au

QBCC #12816

www.wedmaierhomes.com.au  
 www.facebook.com/wedmaierhomes