



Wedmaier Homes



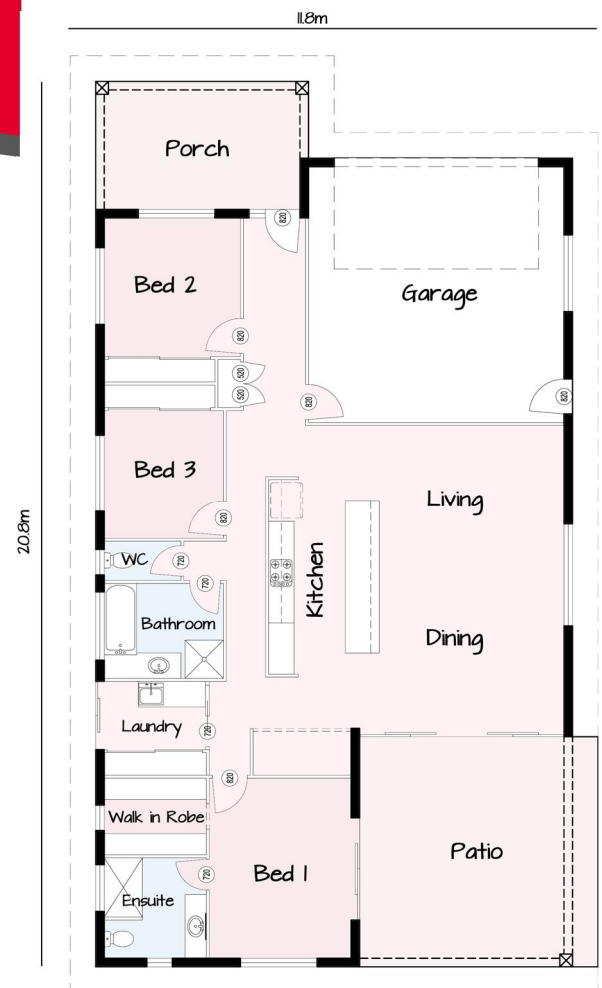
THE GRIFFIN

3  2  2  1 

The Arion is a beautiful example of the north Queensland family home. A simple use of space maximising on outdoor living and comfort. The Arion is suitable for wide open spaces or a suburban block.

- 4 Bedrooms (or 3 + study)
- Media Room
- Double Garage
- Open Plan Living with feature stacker doors onto patio
- Security Screens
- Tiles to living areas
- Carpet to bedrooms
- Custom Designed Kitchen
- European Appliances
- Quality Plumbing Items
- Exposed Aggregate Driveway
- Automatic Garage Door
- A/C to all bedrooms

Living: 141m²
 Garage: 39m²
 Patio: 30m²
 Porch: 15m²
 Total: 225m²



+61 7 4035 6177
sales@wedmaierhomes.com.au

QBCC #12816
www.wedmaierhomes.com.au
www.facebook.com/wedmaierhomes