



Wedmaier Homes



THE MILIN

4



2



2



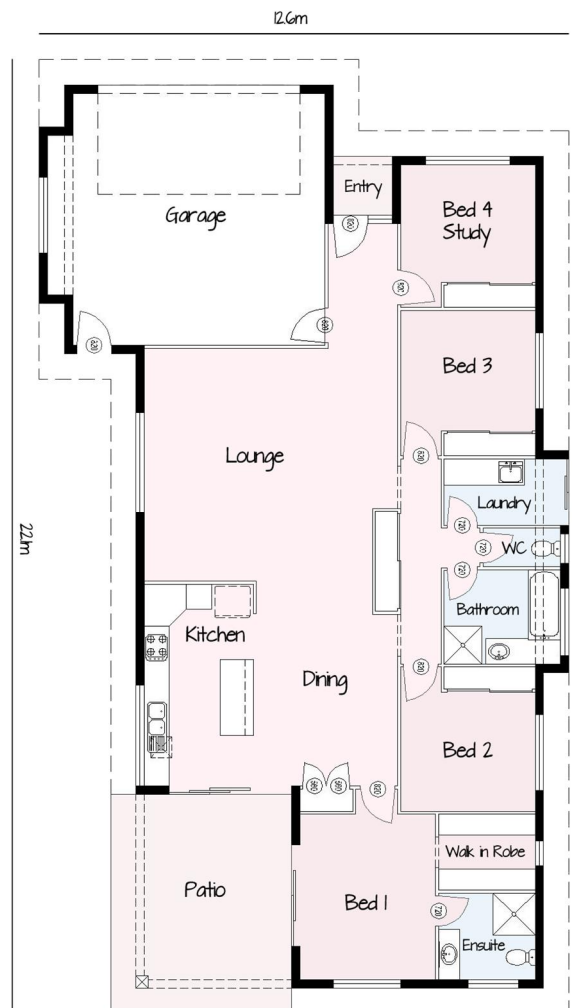
1



The Milin has a perfect open plan for the first home owner but also lends itself to become a great investment. At 222m², it can be built on a narrow block or allow for pools and sheds on bigger blocks.

Living: 154m²
Garage: 44m²
Patio: 22m²
Porch: 2m²
Total: 222m²

- 4 Bedrooms
- Double Garage
- Open Plan Living
- Security Screens
- Tiles to living areas
- Carpet to bedrooms
- Built in Laundry
- Custom Designed Kitchen
- European Appliances
- Quality Plumbing Items
- Exposed Aggregate Driveway
- Automatic Garage Door
- A/C to all bedrooms



+61 7 4035 6177
sales@wedmaierhomes.com.au

QBCC #12816

www.wedmaierhomes.com.au
www.facebook.com/wedmaierhomes