



# Wedmaier Homes



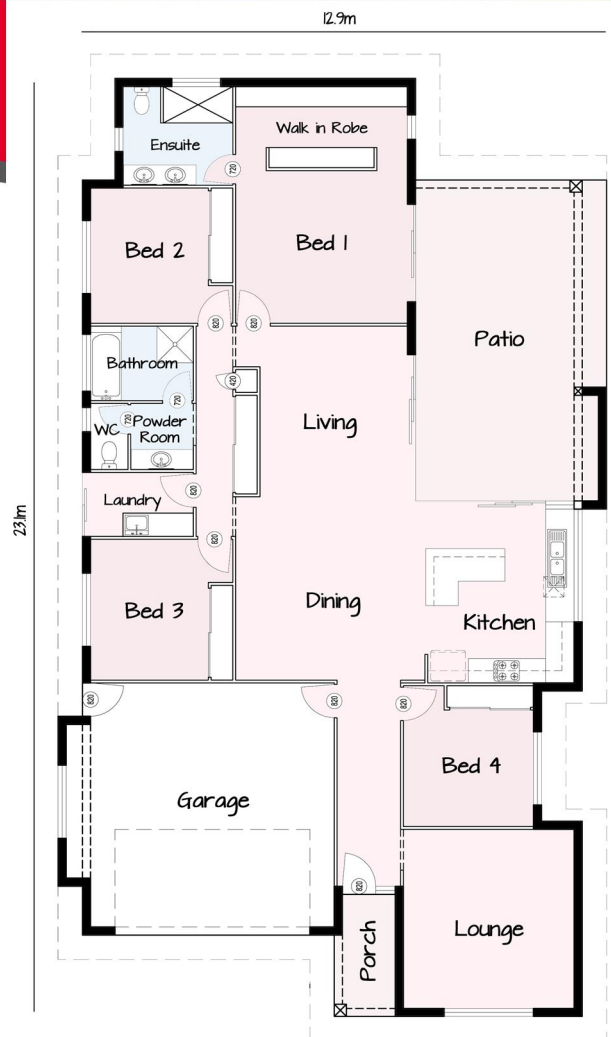
## THE PEGASUS



The Pegasus is a large family home perfect for growing families. It is specifically designed to encourage a lifetime of happiness with many special features including large bathroom areas, 4 large bedrooms and large patio area.

- 4 Bedrooms
- Media Room
- Double Garage
- Open Plan Living with feature stacker doors onto patio
- Security Screens
- Tiles to living areas
- Carpet to bedrooms
- Custom Designed Kitchen
- European Appliances
- Quality Plumbing Items
- Exposed Aggregate Driveway
- Automatic Garage Door
- A/C to all bedrooms & Media

Living: 180 m<sup>2</sup>  
 Garage: 42 m<sup>2</sup>  
 Patio: 37 m<sup>2</sup>  
 Porch: 4 m<sup>2</sup>  
 Total: 263 m<sup>2</sup>



+61 7 4035 6177  
 sales@wedmaierhomes.com.au

QBCC #12816

www.wedmaierhomes.com.au  
 www.facebook.com/wedmaierhomes